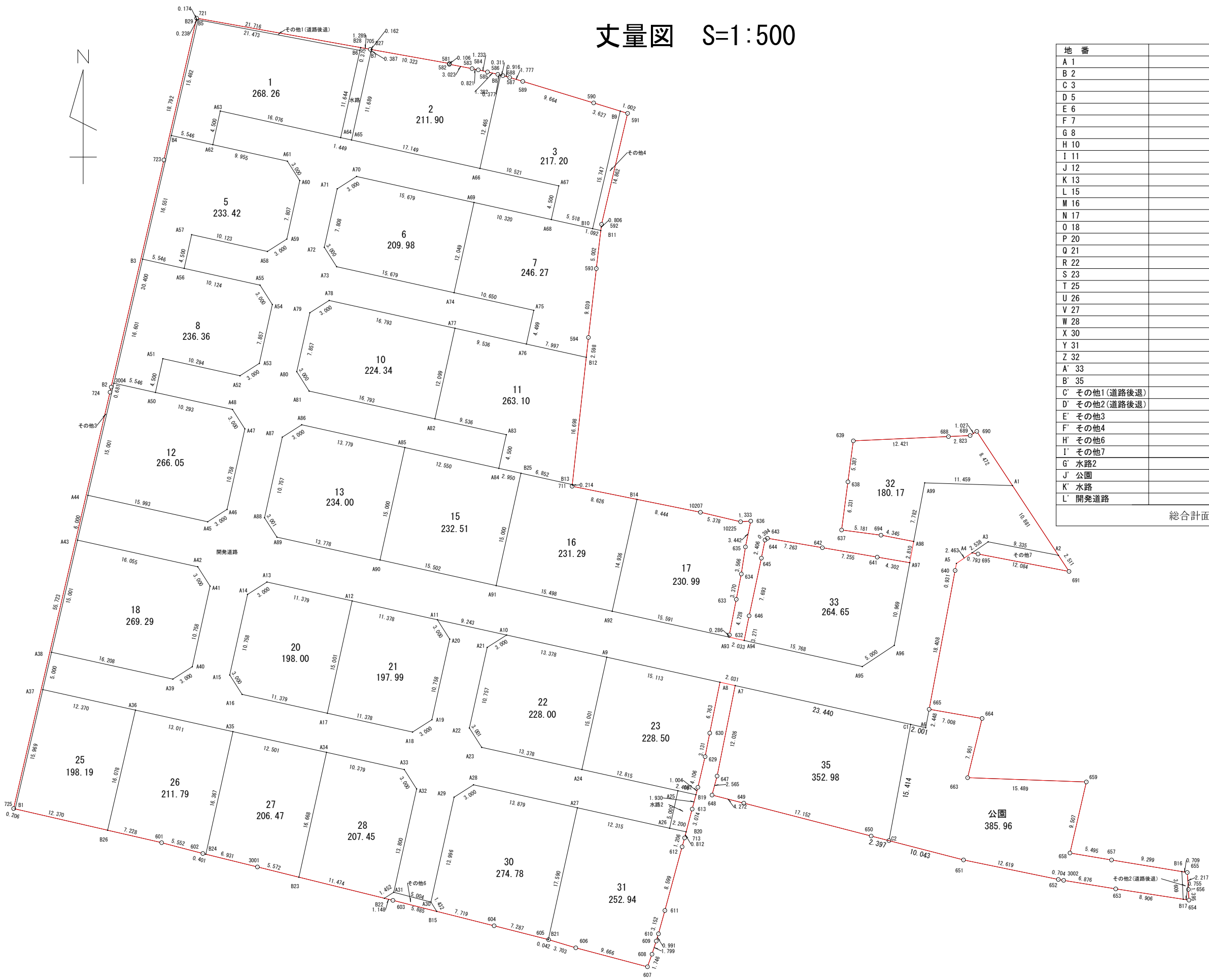


丈量図 S=1:500



地番	面積	
A 1	268.26	m ²
B 2	211.90	m ²
C 3	217.20	m ²
D 5	233.42	m ²
E 6	209.98	m ²
F 7	246.27	m ²
G 8	236.36	m ²
H 10	224.34	m ²
I 11	263.10	m ²
J 12	266.05	m ²
K 13	234.00	m ²
L 15	232.51	m ²
M 16	231.29	m ²
N 17	230.99	m ²
O 18	269.29	m ²
P 20	198.00	m ²
Q 21	197.99	m ²
R 22	228.00	m ²
S 23	228.50	m ²
T 25	198.19	m ²
U 26	211.79	m ²
V 27	206.47	m ²
W 28	207.45	m ²
X 30	274.78	m ²
Y 31	252.94	m ²
Z 32	180.17	m ²
A' 33	264.65	m ²
B' 35	352.98	m ²
C' その他1(道路後退)	5.95	m ²
D' その他2(道路後退)	2.60	m ²
E' その他3	23.37	m ²
F' その他4	15.74	m ²
H' その他6	6.14	m ²
I' その他7	19.98	m ²
G' 水路2	11.52	m ²
J' 公園	385.96	m ²
K' 水路	17.45	m ²
L' 開発道路	2423.67	m ²
総合計面積	9489.25	m ²

宅地
6576.87

その他
73.78

道路、公園、水路
2838.60

所在	高松市下田井町字滝ノ本145他
地番	
作製年月日	令和6年7月7日
作製者	高松市仏生山町甲2130-1 土地家屋調査士・二級建築士 岡野上竜二 宅地建物取引士

求積表

Table A 1: Land measurement data for area A 1. Columns include NO, Xn, Yn, Yn+1-Yn-1, and Xn · (Yn+1-Yn-1). Rows range from A62 to A63 with a total area of 268.2651295 m².

Table B 2: Land measurement data for area B 2. Columns include NO, Xn, Yn, Yn+1-Yn-1, and Xn · (Yn+1-Yn-1). Rows range from A65 to A66 with a total area of 211.9065775 m².

Table C 3: Land measurement data for area C 3. Columns include NO, Xn, Yn, Yn+1-Yn-1, and Xn · (Yn+1-Yn-1). Rows range from A66 to A67 with a total area of 217.20254445 m².

Table D 5: Land measurement data for area D 5. Columns include NO, Xn, Yn, Yn+1-Yn-1, and Xn · (Yn+1-Yn-1). Rows range from A56 to A57 with a total area of 233.4223710 m².

Table E 6: Land measurement data for area E 6. Columns include NO, Xn, Yn, Yn+1-Yn-1, and Xn · (Yn+1-Yn-1). Rows range from A71 to A72 with a total area of 209.9809630 m².

Table F 7: Land measurement data for area F 7. Columns include NO, Xn, Yn, Yn+1-Yn-1, and Xn · (Yn+1-Yn-1). Rows range from A74 to A75 with a total area of 246.2799300 m².

Table G 8: Land measurement data for area G 8. Columns include NO, Xn, Yn, Yn+1-Yn-1, and Xn · (Yn+1-Yn-1). Rows range from A50 to A51 with a total area of 236.3662280 m².

Table H 10: Land measurement data for area H 10. Columns include NO, Xn, Yn, Yn+1-Yn-1, and Xn · (Yn+1-Yn-1). Rows range from A79 to A80 with a total area of 224.3469430 m².

Table I 11: Land measurement data for area I 11. Columns include NO, Xn, Yn, Yn+1-Yn-1, and Xn · (Yn+1-Yn-1). Rows range from A82 to A83 with a total area of 263.1069025 m².

Table J 12: Land measurement data for area J 12. Columns include NO, Xn, Yn, Yn+1-Yn-1, and Xn · (Yn+1-Yn-1). Rows range from B2 to A45 with a total area of 266.0504790 m².

Table K 13: Land measurement data for area K 13. Columns include NO, Xn, Yn, Yn+1-Yn-1, and Xn · (Yn+1-Yn-1). Rows range from A87 to A88 with a total area of 234.0021875 m².

Table L 15: Land measurement data for area L 15. Columns include NO, Xn, Yn, Yn+1-Yn-1, and Xn · (Yn+1-Yn-1). Rows range from A85 to A90 with a total area of 232.5126835 m².

Table M 16: Land measurement data for area M 16. Columns include NO, Xn, Yn, Yn+1-Yn-1, and Xn · (Yn+1-Yn-1). Rows range from B25 to A91 with a total area of 231.2958355 m².

Table N 17: Land measurement data for area N 17. Columns include NO, Xn, Yn, Yn+1-Yn-1, and Xn · (Yn+1-Yn-1). Rows range from B14 to A92 with a total area of 230.9998900 m².

Table O 18: Land measurement data for area O 18. Columns include NO, Xn, Yn, Yn+1-Yn-1, and Xn · (Yn+1-Yn-1). Rows range from A43 to A38 with a total area of 269.2928410 m².

Table P 20: Land measurement data for area P 20. Columns include NO, Xn, Yn, Yn+1-Yn-1, and Xn · (Yn+1-Yn-1). Rows range from A14 to A15 with a total area of 198.0074735 m².

Table Q 21: Land measurement data for area Q 21. Columns include NO, Xn, Yn, Yn+1-Yn-1, and Xn · (Yn+1-Yn-1). Rows range from A12 to A17 with a total area of 197.9928270 m².

Table R 22: Land measurement data for area R 22. Columns include NO, Xn, Yn, Yn+1-Yn-1, and Xn · (Yn+1-Yn-1). Rows range from A21 to A22 with a total area of 228.0076865 m².

Table S 23: Land measurement data for area S 23. Columns include NO, Xn, Yn, Yn+1-Yn-1, and Xn · (Yn+1-Yn-1). Rows range from A9 to A25 with a total area of 228.5066690 m².

Table T 25: Land measurement data for area T 25. Columns include NO, Xn, Yn, Yn+1-Yn-1, and Xn · (Yn+1-Yn-1). Rows range from B1 to B26 with a total area of 198.1954540 m².

Table U 26: Land measurement data for area U 26. Columns include NO, Xn, Yn, Yn+1-Yn-1, and Xn · (Yn+1-Yn-1). Rows range from A36 to B26 with a total area of 211.7970535 m².

Table V 27: Land measurement data for area V 27. Columns include NO, Xn, Yn, Yn+1-Yn-1, and Xn · (Yn+1-Yn-1). Rows range from A35 to B24 with a total area of 206.4736650 m².

Table W 28: Land measurement data for area W 28. Columns include NO, Xn, Yn, Yn+1-Yn-1, and Xn · (Yn+1-Yn-1). Rows range from A34 to B23 with a total area of 207.45459295 m².

Table X 30: Land measurement data for area X 30. Columns include NO, Xn, Yn, Yn+1-Yn-1, and Xn · (Yn+1-Yn-1). Rows range from B15 to 604 with a total area of 274.7804145 m².

Table Y 31: Land measurement data for area Y 31. Columns include NO, Xn, Yn, Yn+1-Yn-1, and Xn · (Yn+1-Yn-1). Rows range from A27 to B21 with a total area of 252.94909795 m².

Table Z 32: Land measurement data for area Z 32. Columns include NO, Xn, Yn, Yn+1-Yn-1, and Xn · (Yn+1-Yn-1). Rows range from A98 to A99 with a total area of 180.1701280 m².

Table with 2 columns: Location (所 在), Date of Completion (作製年月日), and Creator (作製者). Location is 高松市下田井町字滝ノ本145地. Date is 令和6年7月7日. Creator is 高松市 仏生山町甲2130-1 土地家屋調査士・二級建築士 岡野上竜二 (岡野上) 宅地建物取引士.

